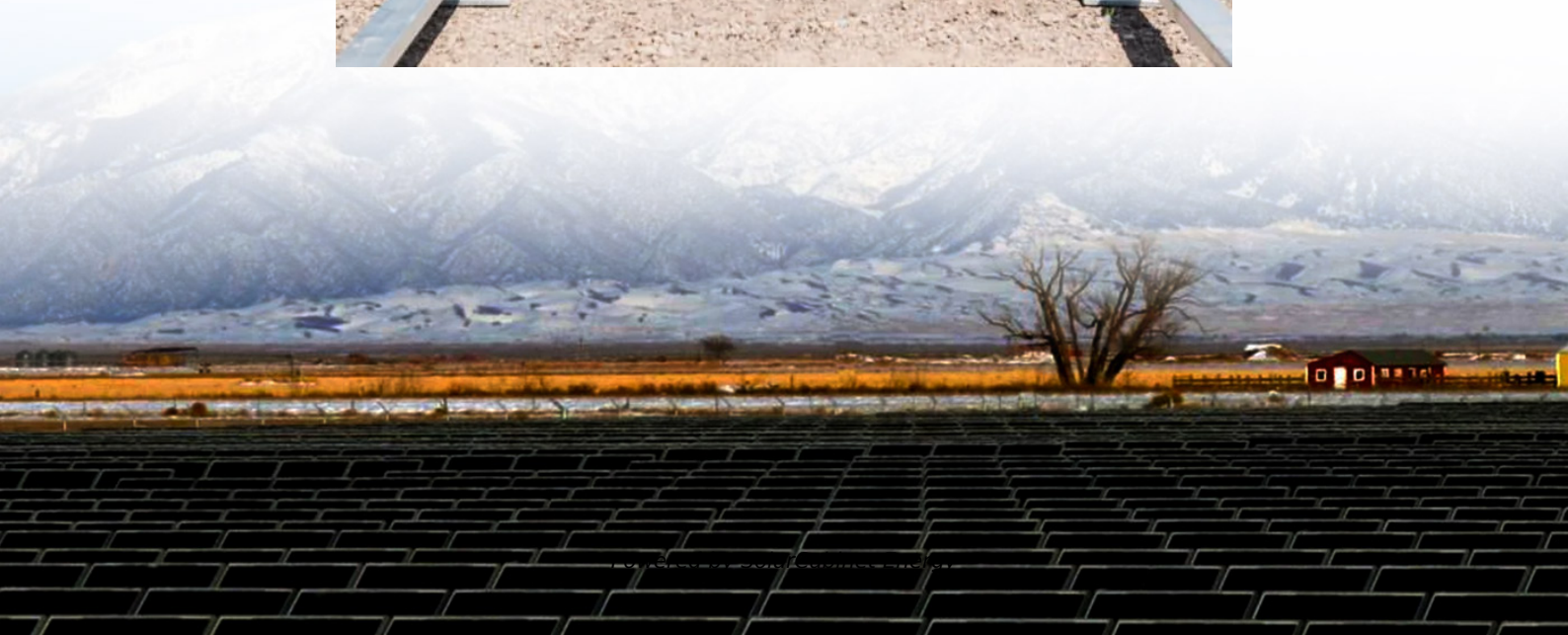


Basic charging capacity of energy storage power station





Overview

What is the power capacity of a battery energy storage system?

As of the end of 2022, the total nameplate power capacity of operational utility-scale battery energy storage systems (BESSs) in the United States was 8,842 MW and the total energy capacity was 11,105 MWh. Most of the BESS power capacity that was operational in 2022 was installed after 2014, and about 4,807 MW was installed in 2022 alone.

What is a battery energy storage system?

Battery Energy Storage Systems (BESS) are essential components in modern energy infrastructure, particularly for integrating renewable energy sources and enhancing grid stability.

What is an energy storage system?

An energy storage system (ESS) for electricity generation uses electricity (or some other energy source, such as solar-thermal energy) to charge an energy storage system or device, which is discharged to supply (generate) electricity when needed at desired levels and quality. ESSs provide a variety of services to support electric power grids.

What is the difference between rated power capacity and storage duration?

Rated power capacity is the total possible instantaneous discharge capability (in kilowatts [kW] or megawatts [MW]) of the BESS, or the maximum rate of discharge that the BESS can achieve, starting from a fully charged state. Storage duration is the amount of time storage can discharge at its power capacity before depleting its energy capacity.

How can energy storage systems prevent EV charging problems?

These problems can be prevented by energy storage systems (ESS). Levelling the power demand of an EV charging plaza by an ESS decreases the required connection power of the plaza and smooths variations in the power it draws



from the grid.

What is energy capacity?

Energy Capacity (MWh) indicates the total amount of energy a BESS can store and subsequently deliver over time. It defines the duration for which the system can supply power before recharging is necessary. For instance, a BESS with an energy capacity of 20 MWh can provide 10 MW of power continuously for 2 hours (since $10 \text{ MW} \times 2 \text{ hours} = 20 \text{ MWh}$).



Basic charging capacity of energy storage power station

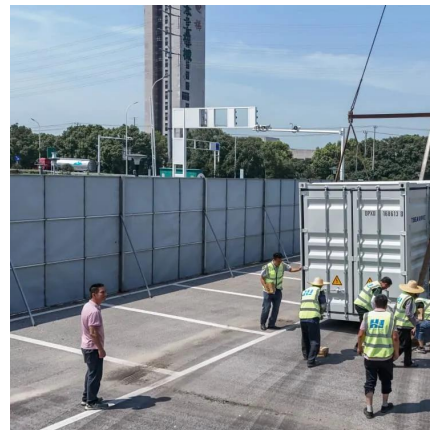


[Battery Energy Storage for Electric Vehicle Charging Stations](#)

The following tables provide recommended minimum energy storage (kWh) capacity for a corridor charging station with 150-kW DCFC at combinations of power grid-supported power (kW) and ...

[Electricity explained Energy storage for electricity generation](#)

Small scale have less than 1 MW of net generation capacity, and many are owned by electricity end users that use solar photovoltaic systems to charge a battery. EIA publishes data only for ...



[Research on the capacity of charging stations based on queuing ...](#)

The research results indicate that during peak hours at the charging station, the probability of electricity consumption exceeding the storage battery's capacity is only 3.562 %. ...

Contact Us



For catalog requests, pricing, or partnerships, please visit:
<https://legnano.eu>