

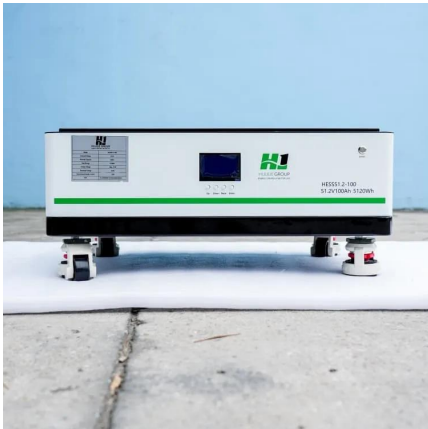
# **Can a 48V inverter use 60V power**





## Can a 48V inverter use 60V power

---

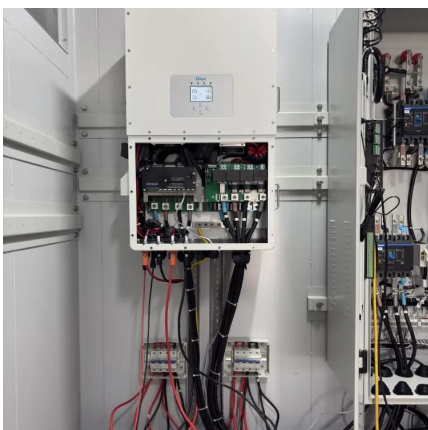


### [Can a 48V Inverter Safely Connect to a 60V Battery Key Insights](#)

Wondering if your 48V inverter can handle a 60V battery? This guide explores voltage compatibility risks, practical solutions, and industry best practices for solar energy systems ...

### [Amazon : 6000W 8000W 10000W 12000W Pure Sine Wave Inverter...](#)

About this item ?Pure Sine Wave Inverter?: This is a real pure sine wave inverter, stable and efficient. It can convert 12V/24V/48V/60V/72V DC to 110V/220V AC. Can be used for ...



### [Can a 1000W 48V Inverter Be Connected to 60V Technical ...](#)

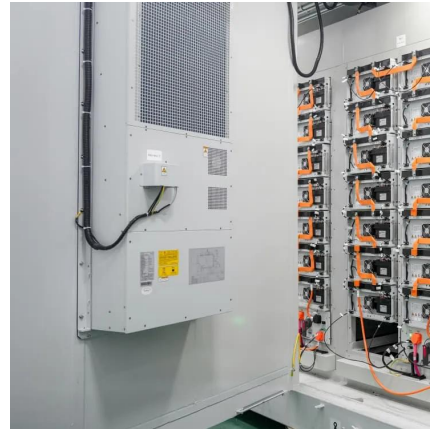
Let's break this down: inverters are like the "translators" of power systems - they need precise voltage ranges to function safely. Connecting a 48V device to 60V is like trying to fit a size-10 ...

### [Using a 52v unit pack power battery on 48 volt hub motor.](#)

All 48v controllers can handle 52v. The hard limit is based the power MOSFETs inside the controllers, which are usually made to switch 60v



max. A fully charged 52v battery is 58.8v, so ...



### [NEW Power Pure Sine Wave Solar Inverter 8000W 12V 24V 48V 60V ...](#)

The pure sine wave inverter does not have the problem of electromagnetic pollution in the power grid and can provide high-quality alternating current. 400W (24V truck). such as fridge, icebox, ...

### [4000W-8000W Pure Sine Wave Power Inverter 12V 24V 48V 60V ...](#)

The pure sine wave inverter has no problem with electromagnetic pollution of the power grid and can supply high quality AC power. -Thickened and thickened heat dissipation aluminium tubes, ...



## Contact Us

---

For catalog requests, pricing, or partnerships, please visit:  
<https://legnano.eu>