

Difference between 12v inverter and 24v inverter





Overview

What is the difference between a 12V and 24V inverter?

The difference between a 12V and 24V inverter is the amount of input volts it can handle. This is the voltage flowing from the battery into the inverter before the electricity is converted from DC to AC. So a 12V inverter is designed for 12 volts input from the battery. And a 24V inverter is designed for 24 volts input from the battery.

What is the difference between 12V and 24v battery systems?

It depends on your system's size, the quality of the inverter, and your power needs. In general, 24V inverters are better for larger systems, while 12V inverters work well for smaller setups. When choosing between 12V and 24V battery systems, it's important to understand their differences. Let's take a look the table below:.

Are 24V inverters a good choice?

24V inverters offer a significant advantage in terms of battery efficiency. Because the system operates at a higher voltage, the current draw is lower, which reduces the strain on the battery bank and prolongs battery life. This makes 24V inverters a better choice for larger systems or those that require long-lasting power.

What is a 24V inverter?

24V Inverters: These systems generally offer higher efficiency, particularly in larger installations, thanks to lower current demands and reduced wire losses. This improved efficiency translates into energy savings, longer battery life, and potentially smaller system components.

Can a 12V inverter run on a 24v battery?

If you try to use a 12V inverter on a 24V battery it will be overloaded. Contrastingly, using a 24V inverter with a 12V battery will lead to a lack of



electrical force. Knowing your inverter's voltage and what that means is critical in order for everything to run correctly.

What are the benefits of using a 24V inverter?

This improved efficiency translates into energy savings, longer battery life, and potentially smaller system components. For instance, a 2400W inverter would require 200A at 12V but only 100A at 24V, significantly reducing wire size and cost.



Difference between 12v inverter and 24v inverter

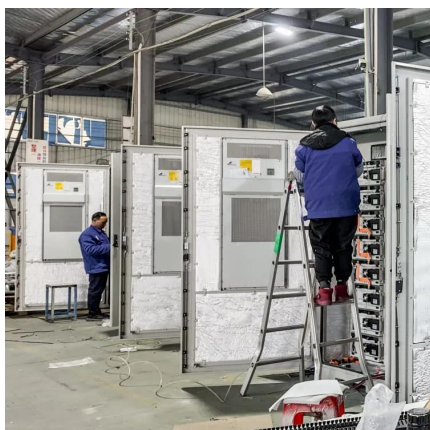


[12V vs 24V Inverter: What's the difference between 12 and 24 ...](#)

The difference between a 12V and 24V inverter is the amount of input volts it can handle. This is the voltage flowing from the battery into the inverter before the electricity is converted from DC ...

[12V vs 24V Inverters Key Differences and Which One is Right for ...](#)

In this comprehensive guide, we'll compare 12V vs 24V inverters in terms of their performance, pros and cons, and ideal use cases to help you decide which one best suits your ...



[12V Inverter vs 24V Inverter -- What Is The Difference & Which ...](#)

This article will explore the differences between 12v inverter vs 24v inverter, considering factors such as energy loss, battery requirements, and suitability for different ...

[Differences Between 12V, 24V and 48V Inverter Systems](#)

First, what's the difference between 12V vs. 24V vs. 48V inverters? Most inverters will fall into three categories for their input requirements:



12VDC, 24VDC and 48VDC. This is referring to ...



Contact Us

For catalog requests, pricing, or partnerships, please visit:
<https://legnano.eu>