

Double-glass bifacial BIPV panels





Overview

Should bifacial panels have double/dual glass?

These days, many bifacial panel designs incorporate double/dual glass at the rear of the modules. Glass-glass panels seem to better transmit light and are more resistant to unpredictable weather, moisture, corrosion, and have good mechanical load capacity.

How do solarland bifacial double glass panels work?

This traditional design focuses only on capturing sunlight from the front. Solarland bifacial double glass panels are designed to capture sunlight from both sides. They are enclosed between two layers of tempered glass, allowing the back to absorb reflected light from the surrounding surfaces.

What is bifacial glass technology?

Bifacial glass technology is the preferred material among manufacturers for the rear side cover of the modules. Some key advantages of the glass-glass structure are: Glass-glass modules can also be frameless, which helps eliminate the cost of an extruded aluminum frame. However, glass-glass models with frames have a lower risk of breakage.

Do bifacial modules come with frames?

As a result, most glass-glass modules come with frames in place. Compared with standard glass backsheets technology, framed modules with two layers of glass are heavier. Therefore, transparent backsheets are a solution for a lighter bifacial module. A more lightweight module means less cost on transportation, labor, and trackers whenever applicable.

Why are glass-glass bifacial modules becoming more popular?

Due to their better reliability, glass-glass bifacial configurations have a larger portion of the worldwide bifacial module market share. Glass shortages, weight concerns for larger format modules, and decreasing prices for



transparent backsheets have caused some manufacturers to switch to a glass-transparent backsheet structure.

Does Trina Solar have a dual glass bifacial module?

However, Trina Solar has made such a breakthrough by abandoning the backsheet and developing the brand-new dual glass module. Trina Solar Vertex TSM-DEG21C.20 (670 W) framed dual-glass bifacial module



Double-glass bifacial BIPV panels

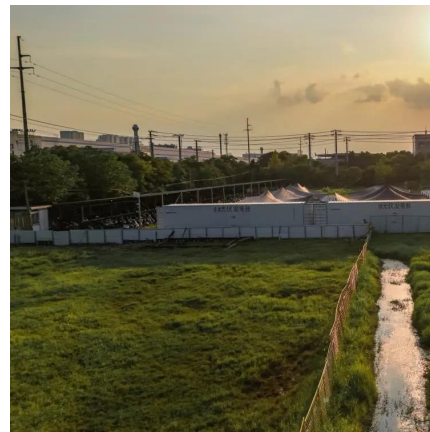


[Choose Right: Bifacial vs Glass-Glass Solar Panels Decision Guide](#)

1 day ago · This guide provides clear decision frameworks for choosing between bifacial's energy gains, glass-glass's durability, or custom solutions when standard panels won't work. Your ...

[Bluesun BIPV Double Glass Solar Panel 320W 330W Mono Bifacial ...](#)

Bifacial Solar Panel The power generation gain of the Bifacial Solar Panel mainly comes from the back side, and by receiving the reflected light from the atmosphere and the reflected light on ...



BIPV Double Glass Solar Panel, Transparent BIPV Solar Panels, Bifacial

Our BIPV Solar Panels offer a temperature range of -40°C To 85°C, and a connector type of MC4. The operating voltage ranges from 36V-48V and is provided with a 25 year warranty.



[BIPV 500 Watt Bifacial Solar Panels Double Glass Module For ...](#)

High quality BIPV 500 Watt Bifacial Solar Panels Double Glass Module For Rooftop Solar System from China, China's leading BIPV 500 Watt



Bifacial Solar Panels product, with strict quality ...



[The Difference Between Bifacial Module and Double Glass Bifacial...](#)

In summary, the primary difference between a bifacial module and a double glass bifacial module is the presence of glass on both sides in the latter, which provides improved ...

[A Grade Double Glass BIPV Solar Panels, Photovoltaic Solar Panels](#)

High quality A Grade Double Glass BIPV Solar Panels, Photovoltaic Solar Panels Bifacial High Capacity from China, China's leading bipv solar tiles product, with strict quality control building ...



Contact Us

For catalog requests, pricing, or partnerships, please visit:
<https://legnano.eu>