

How is the power supply of the communication base station





Overview

What are the components of a base station?

Power Supply: The power source provides the electrical energy to base station elements. It often features auxiliary power supply mechanisms that guarantee operation in case of lost or interrupted electricity, during blackouts. **Baseband Processor:** The baseband processor is responsible for the processing of the digital signals.

Why are base stations important in cellular communication?

Base stations are important in the cellular communication as it facilitate seamless communication between mobile devices and the network communication. The demand for efficient data transmission are increased as we are advancing towards new technologies such as 5G and other data intensive applications.

How does a base station work?

It usually connects the device to other networks or devices through a dedicated high bandwidth wire of fiber optic connection. Base stations typically have a transceiver, capable of sending and receiving wireless signals; Otherwise if they only send the trailer it will be considered a transmitter or broadcast point only.

Why do we need a base station?

Technological advancements: The New technologies result in evolved base stations that support upgrades and enhancements such as 4G, 5G and beyond, its providing faster speeds with better bandwidth. **Emergency services:** They provide access to emergency services, so that in case of emergency, people can call through their mobile phones.

What are the properties of a base station?

Here are some essential properties: **Capacity:** Capacity of a base station is its



capability to handle a given number of simultaneous connections or users.

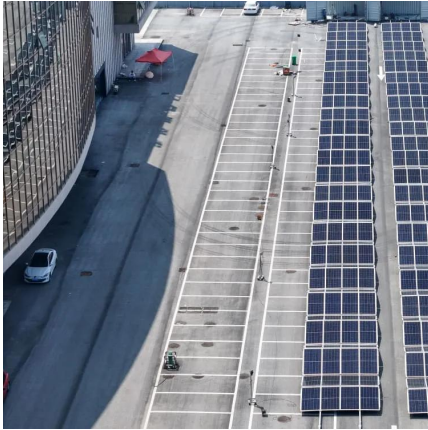
Coverage Area: The coverage area is a base station is that geographical area within which mobile devices can maintain a stable connection with the base station.

What is a 3G base station converter?

In a 3G Base Station application, two converters are used to provide the +27V distribution bus voltage during normal conditions and power outages.



How is the power supply of the communication base station



Collaborative optimization of distribution network and 5G base stations

In this paper, a distributed collaborative optimization approach is proposed for power distribution and communication networks with 5G base stations. Firstly, the model of 5G ...

[Multi-objective cooperative optimization of communication ...](#)

Recently, 5G communication base stations have steadily evolved into a key developing load in the distribution network. During the operation process, scientific dispatching and management of ...



[Design of mobile base station communication power supply system](#)

Combining the practice and lessons learned from providing power for mobile base stations, a solution for the reliability, maintainability and availability of the mobile base station ...



[Optimal configuration for photovoltaic storage system capacity in ...](#)

Base station operators deploy a large number of distributed photovoltaics to solve the problems of high energy consumption and high electricity



costs of 5G base stations. In this ...



The business model of 5G base station energy storage ...

1 Introduction 5G communication base stations have high requirements on the reliability of power supply of the distribution network. During planning and construction, 5G base stations are ...



A Device that Controls the Power Supply Sources of a Mobile

One of the most important factors for the effective operation of mobile communication systems is the uninterrupted and stable supply of power to base stations. Uninterrupted power supply to ...



Contact Us

For catalog requests, pricing, or partnerships, please visit:
<https://legnano.eu>