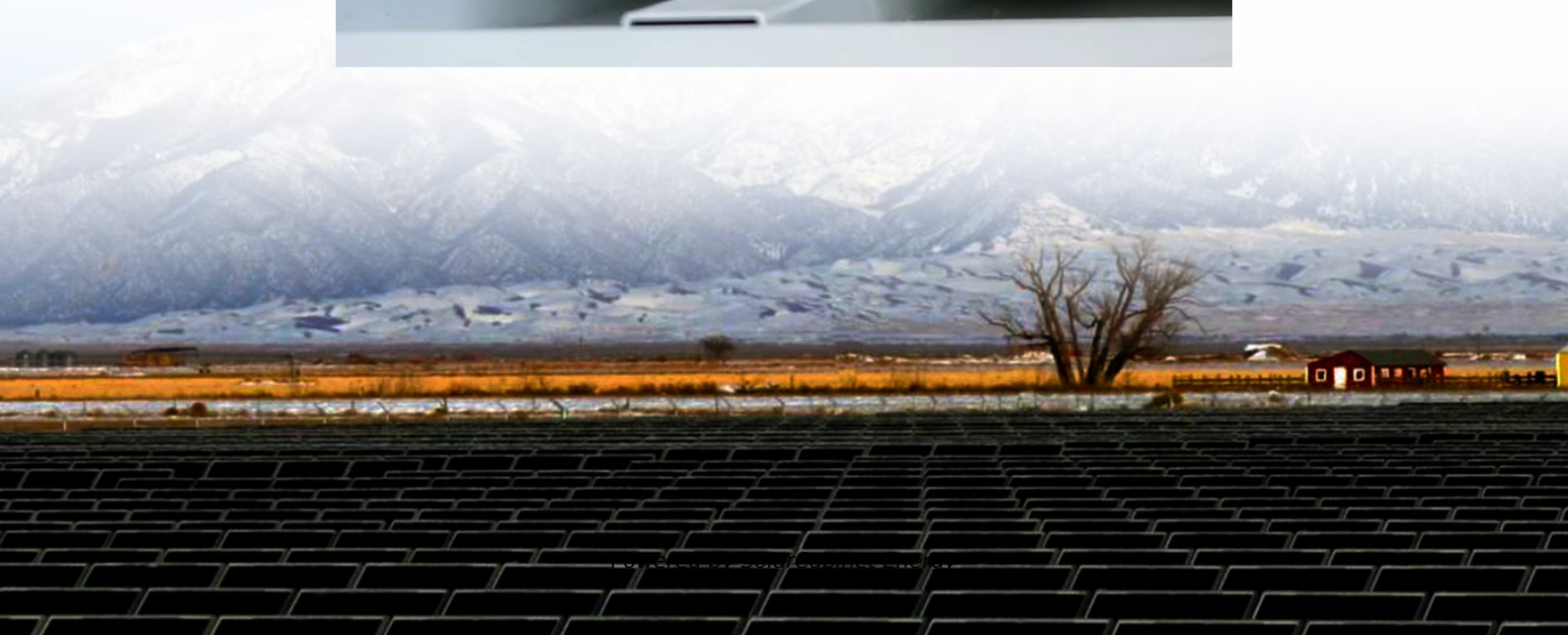


How much can a 12v inverter increase





Overview

How much power does an inverter use?

When you include the idle power consumption of the inverter with its conversion inefficiency while powering small loads, 50-150W, 55-70% efficient is a good number. Many units have a "low power" option where idle power consumption is decreased; however, those are only useful if you have NO loads whatsoever on the unit.

How much power does a 12Kw inverter use?

My 18kw inverter can handle 3X the surge current (54kw) for 20seconds. This is the most important spec to me. It also uses about 300 watts/hr idle power. But the 12kw model which is 33% smaller still uses 270 watts. I just figure one extra solar panel to power the inverter. If you have a lot of heavy loads, it's not a big deal.

Why is a high power inverter more efficient?

Higher power inverters tend to have higher no load draw 4. Inverters do not have uniform efficiency across their whole power range (most but not all will be most efficient at or near their limit) 5. No inverter is more efficient than the most efficient inverter, so the more you can run directly from DC the less efficiency penalty you get hit with.

How does a power inverter work?

For the record, a power inverter converts ~ 12V dc--> ~120 AC (normally non-sinusoidal). to increase the power output, the amount of output current the device can source is increased, whereas its output voltage remains the same.

How much power do I need for a 1000W inverter?

For example, if your equipment consumes 1000W we would recommend an inverter capable of producing at least 1500W, ideally 2000W. Note of caution: The equipment label often shows the output power, but there is always



inefficiency in energy conversion so the input power will be greater.

Do solar inverters need surge power?

Surge power is the initial boost of power to start a few appliances which lasts for a couple of seconds. Most of the motor base electronics required surge power which could be 2 or 3 times higher than their stable wattage requirement. But the good news is that most solar inverters come with a surge power technology to run this kind of appliance.



How much can a 12v inverter increase

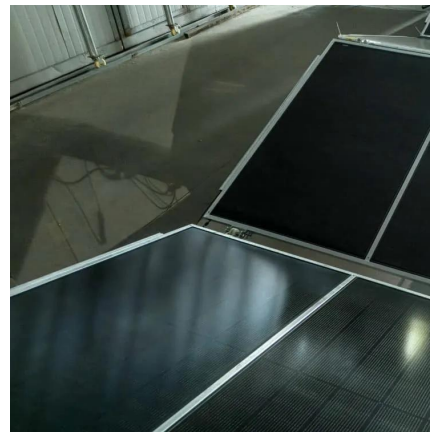


[What Happens If Your Inverter Is Too Big? Risks. Solutions](#)

An oversized power inverter can undermine the efficiency, cost-effectiveness, and longevity of your power system. While it might seem like a "safer" choice, improper sizing leads to hidden ...

[Tweaking Your Power Inverter. Get More Bang for the Buck](#)

Using less than 12 dollars worth of parts, get more power / fix your broken power inverter. This instructable is a guide for repairing/increasing the output power of a simple dc-AC power ...



[Does converting 12V DC to 110V AC really increase the available ...](#)

It converts energy from one form (current at 12V DC) to another form (current at 110V AC). It can't produce energy, to the contrary: like any physical device it is imperfect, so it will loose energy.

Contact Us



For catalog requests, pricing, or partnerships, please visit:
<https://legnano.eu>