

Is a three-phase inverter compatible with a single-phase one





Overview

Can I use a single phase inverter with a three phase grid?

No. A three-phase inverter requires a three-phase connection. If you only have single-phase power, you must use a compatible single-phase inverter. Do I need a three-phase inverter for a 10 kW solar system?

In most regions, yes. What is the difference between a single phase and a three phase inverter?

Single-phase inverters convert DC input into single-phase output. The output consists of one phase (A- N, B- N, or C- N), formed by one live and one neutral conductor, with a standard voltage of 220 V — mainly for residential use. Three-phase inverters convert DC power into three-phase supply, generating three equally spaced AC phases.

Can a 3 phase inverter be mixed?

Important note: Power bands may overlap, but single and three-phase inverters must never be mixed! You can identify by output voltage: 220 V indicates single-phase; 380 V/400 V indicates three-phase. Under the same brand and quality, three-phase inverters usually cost about 300–500 RMB more per unit than single-phase ones.

How many inverters do I need for a 3 phase network?

However, network operators will not allow an imbalance across the phases, you'll either have to install three single-phase inverters for each phase, or one three phase inverter that will work across all three phases.

Can a 3 phase GT inverter run on a single phase?

There is supplement house power, supply house power when grid down, and sell power to grid in addition to supplement house power. That inverter will not run with only one phase present. Three phase GT inverters do not need the same amount of capacitor storage a single phase GT inverter needs as



such will not function on single phase.

Does a single phase inverter increase power?

The three phases are measured separately, and it is allowed that the three phases are different. Therefore, if the power of one phase increases, it will not affect the other two phases. When a single-phase inverter is connected to the power grid, two issues should be noted.

How does a 3 phase inverter work?

The inverter will synchronize with one of the phases in a three-phase grid, delivering power efficiently. This setup is usually sufficient for smaller residential systems and does not cause significant issues, ensuring you receive the same benefits as you would with a three-phase inverter.



Is a three-phase inverter compatible with a single-phase one



[FAQ: Can I connect a single-phase inverter to a three-phase panel?](#)

Is it allowable for a single phase inverter (with L1 and L2 output) 2 pole breaker to connect to a 3-phase panel that has L1, L2, and L3 busbars? This is a valid question considering commercial ...

[Single vs. Three-Phase Solar Inverters: Which One Do You Need?](#)

Inverters can be compatible with either single- or three-phase systems, and the type you need depends largely on your existing electrical setup. In the UK, homes typically use single-phase ...



[3 Phase Inverter on a Single phase home supply. On Grid Solar ...](#)

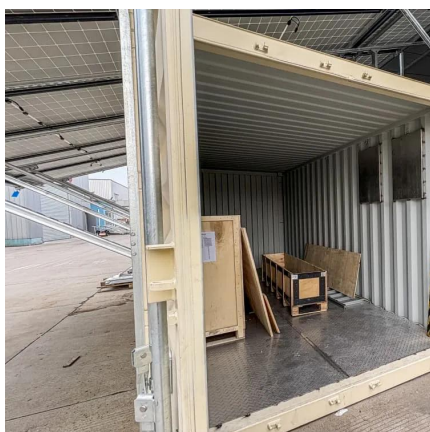
Is a 3 phase inverter compatible with a single phase supply for an on-Grid system? My worry is that it may be possible to use but I may only be able to use one leg of the 3 phase ...

[Can single-phase and three-phase inverters be connected together](#)

If there is already a three-phase power grid, the single-phase inverter only needs to be connected to 1 phase wire (i.e., live wire), 1 neutral wire,



and 1 ground wire. Therefore, there is no ...



3 Phase Inverter on a Single phase home supply. On Grid Solar system

Is a 3 phase inverter compatible with a single phase supply for an on-Grid system? My worry is that it may be possible to use but I may only be able to use one leg of the 3 phase ...

Are three phase solar inverters much more expensive than single phase

The system you are describing i have installed many times. One went in on the day before good Friday this year 5kw sun grow single phase 12.1kw of solar panels 12.8kWh battery while it is ...



How does Single-Phase Inverter Work on a Three-Phase ...

Technical aspect of connecting single-phase inverter to a three-phase supply Connecting a three-phase inverter with a three-phase grid connection is always the preferred choice in large or ...



The Differences between Single-phase Inverter and Three-phase Inverter

In this article, we will explain what they are and talk about the differences between single-phase inverter and three-phase inverter. A single-phase inverter is fairly obvious.



Contact Us

For catalog requests, pricing, or partnerships, please visit:
<https://legnano.eu>