

Lithium battery pack charging requirements





Overview

Lithium charge requires a two-stage process involving constant current followed by constant voltage phases. The charging process varies depending on battery chemistry, with lithium iron phosphate batteries requiring different voltage parameters than lithium cobalt batteries. How should a lithium battery pack be charged?

It is recommended that lithium battery packs be charged at well-ventilated room temperature or according to the manufacturer's recommendations. Avoid exposing the battery to extreme temperatures when charging, as this can affect its performance and life.

Should you use a certified charger to charge lithium battery packs?

Using a certified charger to charge lithium battery packs must be considered. Regulatory agencies have tested and approved certified chargers to meet safety standards and specifications, reducing the risk of potential hazards such as short circuits or overheating during the charging process.

How to charge lithium iron batteries?

When it comes to charging lithium iron batteries, it's crucial to use a lithium-specific battery charger that incorporates intelligent charging logic. These chargers are designed with optimized charging technology to ensure the best performance and longevity of your batteries.

What are the best practices when charging lithium-ion batteries?

To ensure optimal performance and safety when charging lithium-ion batteries, adhere to the following best practices: Use Compatible Chargers: Always use chargers designed specifically for lithium batteries to avoid damage and ensure proper charging.

How much charge should a lithium ion battery be?

However, for long-term storage, it is advisable to charge the batteries to about



50%. This intermediate charge level helps to preserve the battery's overall performance and prevent excessive self-discharge. When it comes to lithium-ion batteries, it's important to avoid fully discharging them whenever possible.

Do lithium batteries need a full charge?

Partial Charges Are Acceptable: Unlike lead-acid batteries, lithium batteries do not suffer from memory effect; partial charges are beneficial. Disconnect After Fully Charged: Avoid leaving batteries connected to chargers after they reach full charge to prevent overcharging. Best Practices Chart How Important Is It to Use Compatible Chargers?



Lithium battery pack charging requirements

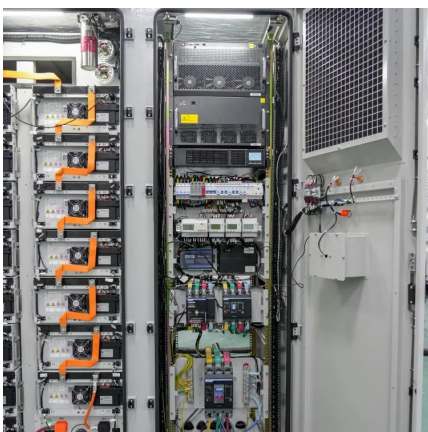


[Safe Charging and Storage of Lithium-Ion Batteries in the E ...](#)

Certain attributes of lithium-ion batteries make them susceptible to catastrophic failure under certain predictable circumstances. Manufacturing defects, inadequate or improperly ...

[What Are the Basic Correct Charging Methods for Lithium Battery Packs](#)

Lithium battery packs are widely used in various applications, from electric vehicles to renewable energy storage systems. Proper charging is crucial for ensuring their optimal performance, ...



[How to Charge a Lithium-Ion Battery Properly: Step-by-Step Guide](#)

In this guide, we'll walk you through the best practices for charging lithium-ion batteries, debunk common myths, and offer tips to keep your devices running efficiently for the ...

[Best Practices for Charging, Maintaining, and Storing Lithium ...](#)

By implementing storage guidelines, charging practices, and avoiding excessive discharge, you can ensure that your batteries perform optimally



for a longer duration. To better understand ...

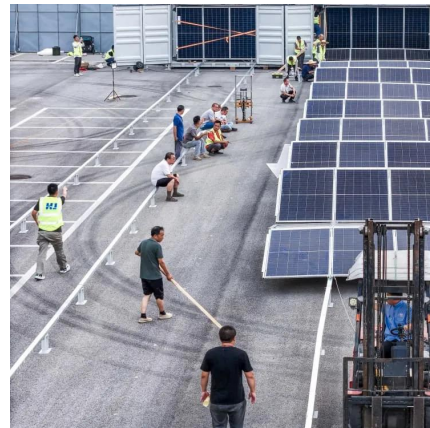


[What Are the Correct Charging Methods for Lithium Battery Packs?](#)

Proper charging is essential for ensuring their optimal performance, longevity, and safety. This article explains the correct charging methods for lithium battery packs, using 2025 industry ...

[What Are the Correct Charging Methods for Lithium Battery Packs?](#)

1. Introduction to Lithium Battery Pack Charging
Lithium battery packs consist of multiple lithium-ion cells connected in series or parallel to achieve the desired voltage and capacity. The ...



Contact Us

For catalog requests, pricing, or partnerships, please visit:
<https://legnano.eu>