

Main equipment in the communication engineering base station room





Overview

Communication equipment is the main part of a base station. These parts send and receive signals for wireless communication. Important items include antennas, transceivers, and routers. Antennas send and pick up signals from phones. Transceivers turn signals into data. What is the main equipment room & telecommunications cabinet?

The Main Equipment Room (MER) acts as the main IT location for a building. It is the transition point for all the voice and data cabling that enters the building and we connect it further to the other equipment rooms. The main telecommunications cabinet contains electronic equipment that we would formerly describe as the telephone exchange.

What equipment does a radio station use?

In order to accomplish this, the site uses several different pieces of equipment: Antennae – The hardware unit at the top of and all over a tower. Ultimately receives, sends, and modifies multiple signals. They can be directional or omnidirectional depending on the placement of the other towers in the network.

What is a communications equipment system?

Some communications equipment systems include detectors and alarms that transmit to centralized control centers within the system itself. High-rise buildings often utilize a second dedicated facility alarm and can be included as part of a central alarm system connected to the local fire department.

What does a base station do?

Base stations are responsible for transmitting and receiving data to and from wireless devices, as well as managing network resources and ensuring reliable and efficient communication. The basic function of a base station is to convert wireless signals into digital signals that can be transmitted over a wired network infrastructure.



What is a base station in a wireless network?

At the heart of wireless communication networks are base stations, which act as the gateway between wireless devices and the network infrastructure. Base stations are responsible for transmitting and receiving data to and from wireless devices, as well as managing network resources and ensuring reliable and efficient communication.

What are the different types of base stations?

Some basic types of base stations are as follows: Macro-base stations are tall towers ranging from 50 to 200 feet in height, placed at strategic locations to provide maximum coverage in a given area. Those are equipped with large towers and antennas that transmit and receive radio signals from wireless devices.



Main equipment in the communication engineering base station room

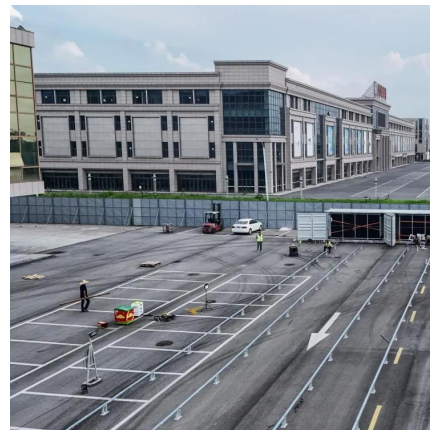


[The Satellite Communication Ground Segment and Earth Station ...](#)

This updated and expanded second edition reflects the state of earth station design and ground segment architecture. From international telephone network gateways to direct broadcast ...

Reliability prediction and evaluation of communication base stations ...

In this paper, we propose a simple logistic method based on two-parameter sets of geology and building structure for the failure prediction of the base stations in post-earthquake.



Contact Us

For catalog requests, pricing, or partnerships, please visit:
<https://legnano.eu>