

Next to the inverter battery





Overview

Should I keep the batteries close to the inverter?

I'd recommend keeping the batteries close to the inverter. Your costs would be astronomical for appropriately sized DC lines of that length. Efficiency would also suffer. Just have two separately located battery banks if you require battery support for both inverters. Yep 150' , but you'll need cable as thick as your forearm lol.

Where should I put my inverter?

Much better to put the inverter as close to your batteries as possible and run your 120V wires the longer distance. Much more efficient power transfer from point to point with lower cost wiring. I hope you have AGM batteries in the house or a battery box vented to outside.

Do inverters need to be connected to batteries?

Connecting inverters to batteries is an important part of an off-grid power solution or backup power system, and the right connections ensure that the system runs efficiently.

Do inverters and batteries need to match?

The inverter and batteries must match in terms of voltage, capacity, and power output. If you are using a 12V battery, then the input voltage of the inverter must match the battery voltage. If the specifications of the battery and the inverter do not match, the system will not operate stably and may even damage the equipment.

How far should an inverter be from a battery bank?

Due to wire size & cost and potential fire hazard it is better to keep your inverter within 5 feet of your battery bank. Another area to be concerned it having more than 2 strings of batteries wired in parallel. It is hard to get a balanced charge and discharge equally across all of the batteries which



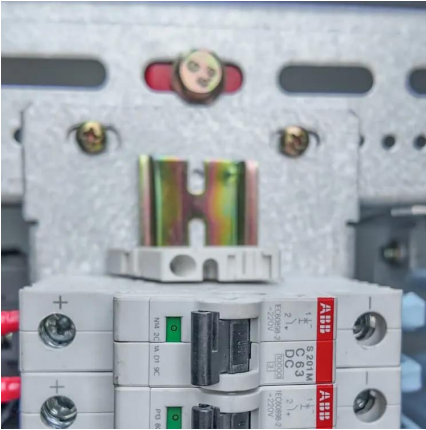
results in one or more getting over worked.

How to install a battery inverter?

1. Wrenches or pliers for tightening connections 2. Cable cutters and strippers to prepare the wires 3. A multimeter to check the voltage 4. Appropriate battery cables of correct sizes typically red for positive and black for negative terminal iii. Connect the positive terminal of the battery to the inverter



Next to the inverter battery



[Best Inverter Batteries: A Comprehensive Guide To Power Solutions](#)

About Inverter Battery The inverter battery is a crucial component of the inverter system. It acts as the source of energy by storing the electrical energy when power is available ...

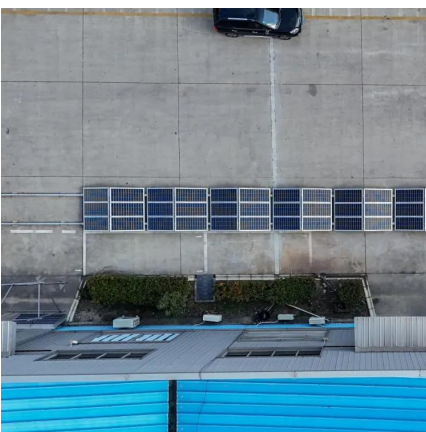
[Connecting Inverters and Batteries for Maximum Efficiency](#)

Redundancy: If one battery or inverter fails, the others can continue to supply power, enhancing the reliability of your system. Scalability: Adding more batteries or inverters to your ...



[Solar Panel Inverter Distance: How Far Can They Be from Your ...](#)

When considering your solar panel inverter distance, storing the inverter and batteries in a guest house is a practical decision, especially for safety and temperature control. Batteries, ...



[How far from batteries can I place inverter? : r/solar](#)

Right now everything is located in the basement (controller, batteries, inverter) and there is no (consistent) load being placed on the array. The



inverter in use now is quite old and is not a ...



[Batteries and Inverter next to each other, bad idea?](#)

I am planning to build a stepped battery box that will house 12 FLA batteries. I would like to place my inverter inside this box as well. Is this a bad idea due to the possibility of the inverter ...

Contact Us

For catalog requests, pricing, or partnerships, please visit:
<https://legnano.eu>