

Outdoor power supply requirements for low-voltage distribution rooms





Overview

What is a low voltage distribution room?

A low voltage distribution room is a facility used to distribute and manage low-voltage electricity, typically operating at voltages below 1,000 volts. It is responsible for distributing power to various electrical equipment or end users and provides monitoring, protection, and control of the power supply.

Should I choose a low voltage or high voltage distribution room?

Choosing between a low voltage or high voltage distribution room depends on the user's power needs and the specific application scenario. For residential or small commercial areas, a low voltage distribution room is sufficient.

What is a main low voltage room?

The Main Low-Voltage Room is designed to receive electrical power from the substation. The system will have essential, non-essential, and UPS main panels for the reception and distribution of power. All the electricity supply for the building will be monitored and controlled from the primary low voltage (LV) room.

What is a high voltage distribution room?

Level of Automation High voltage distribution rooms often integrate advanced automation systems, such as real-time monitoring and remote control, to manage complex power requirements and handle emergencies. In comparison, low voltage rooms use simpler control systems, often operated manually or with limited automation.

How high should the floor of a power distribution room be?

□ The floors of high and low voltage power distribution rooms, control rooms, duty rooms, etc. should be 150 to 300 mm higher than the outdoor ground. When attached to a building, it can be flush with the floor of the building. □ The doors of high and low voltage power distribution rooms, transformer



rooms, and capacitor rooms should open outwards.

Do high voltage distribution rooms need insulation?

Insulation Requirements High voltage distribution rooms require much higher insulation standards compared to low voltage rooms. High voltage equipment uses thicker insulation and specialized protective materials to prevent arcing and electrical breakdowns.



Outdoor power supply requirements for low-voltage distribution room

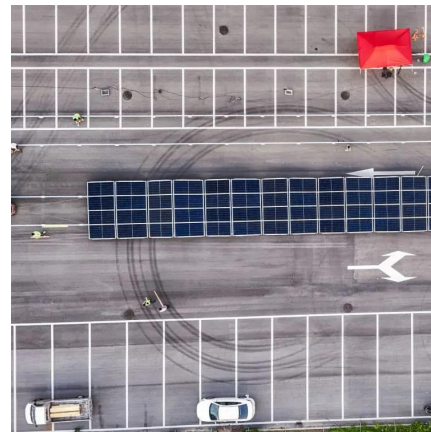


Requirements For The Layout Of High And Low Voltage Distribution Rooms

The following article will tell you about the layout requirements of high and low voltage distribution rooms and transformer rooms and the methods of high and low voltage ...

[An Introduction to Exterior Electrical Power Distribution](#)

Electric Supply Stations shall be defined as stations that transform the energy level (voltage) for further bulk distribution at medium voltage levels. The low voltage equipment in a main or ...



[UFC 3-550-01 Exterior Electrical Power Distribution, with ...](#)

The design criteria and standards contained within are the minimum requirements acceptable for military installations for efficiency, economy, durability, maintainability, and reliability of ...

[What Is Low Voltage - Definition, Safety, And Common Uses](#)

Lighting systems: Low voltage lighting, such as LED lights and halogen lamps, is commonly used for residential and commercial purposes,



including landscape lighting, recessed lighting, and ...



[Installation of 11kV/440V Distribution Substation](#)

Abstract-- A substation is a part of an electrical generation, transmission, and distribution system. Substations generally have switching, protection and control equipment, and transformers. ...

Contact Us

For catalog requests, pricing, or partnerships, please visit:
<https://legnano.eu>