

Three types of wind power systems for communication base station energy storage systems





Overview

How can large wind integration support a stable and cost-effective transformation?

To sustain a stable and cost-effective transformation, large wind integration needs advanced control and energy storage technology. In recent years, hybrid energy sources with components including wind, solar, and energy storage systems have gained popularity.

Which energy storage systems are used in wind farms?

Therefore, energy storage systems are used to smooth the fluctuations of wind farm output power. In this chapter, several common energy storage systems used in wind farms such as SMES, FES, supercapacitor, and battery are presented in detail. Among these energy storage systems, the FES, SMES, and supercapacitors have fast response.

What are the challenges faced by wind energy storage systems?

Energy storage systems in wind turbines With the rapid growth in wind energy deployment, power system operations have confronted various challenges with high penetration levels of wind energy such as voltage and frequency control, power quality, low-voltage ride-through, reliability, stability, wind power prediction, security, and power management.

Who is responsible for battery energy storage services associated with wind power generation?

The wind power generation operators, the power system operators, and the electricity customer are three different parties to whom the battery energy storage services associated with wind power generation can be analyzed and classified. The real-world applications are shown in Table 6. Table 6.

Can energy storage improve wind power integration?

Overall, the deployment of energy storage systems represents a promising



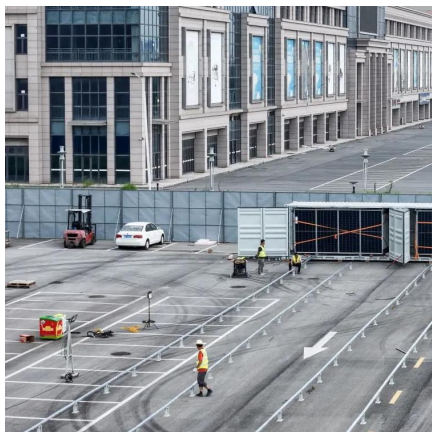
solution to enhance wind power integration in modern power systems and drive the transition towards a more sustainable and resilient energy landscape. 4. Regulations and incentives This century's top concern now is global warming.

What are the problems of wind energy integration?

Wind energy integration's key problems are energy intermittent, ramp rate, and restricting wind park production . The energy storage system generating-side contribution is to enhance the wind plant's grid-friendly order to transport wind power in ways that can be operated such as traditional power stations.



Three types of wind power systems for communication base station

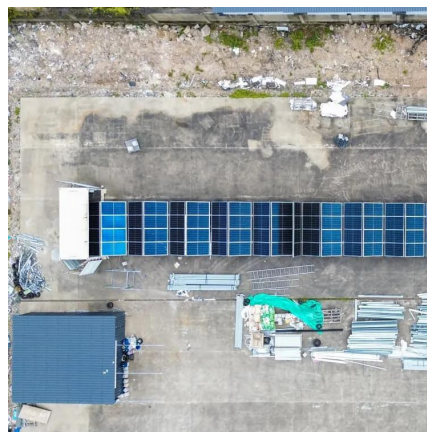


[Solution of Mobile Base Station Based on Hybrid System of Wind](#)

This paper designs a wind, solar, energy storage, hydrogen storage integrated communication power supply system, power supply reliability and efficient energy use through energy storage ...

[Telecom Base Sites , Hybrid Energy Mobile Wireless Station](#)

Discover the power of our Hybrid Energy Mobile Wireless Station, offering seamless, energy-efficient telecom base site solutions. Designed for versatility with solar, wind, and diesel ...



[Communication Base Station Energy Storage , Huijue Group E-Site](#)

Why Energy Storage Is the Missing Link in 5G Expansion? As global 5G deployments accelerate, operators face a paradoxical challenge: communication base station energy storage systems ...

Contact Us



For catalog requests, pricing, or partnerships, please visit:
<https://legnano.eu>